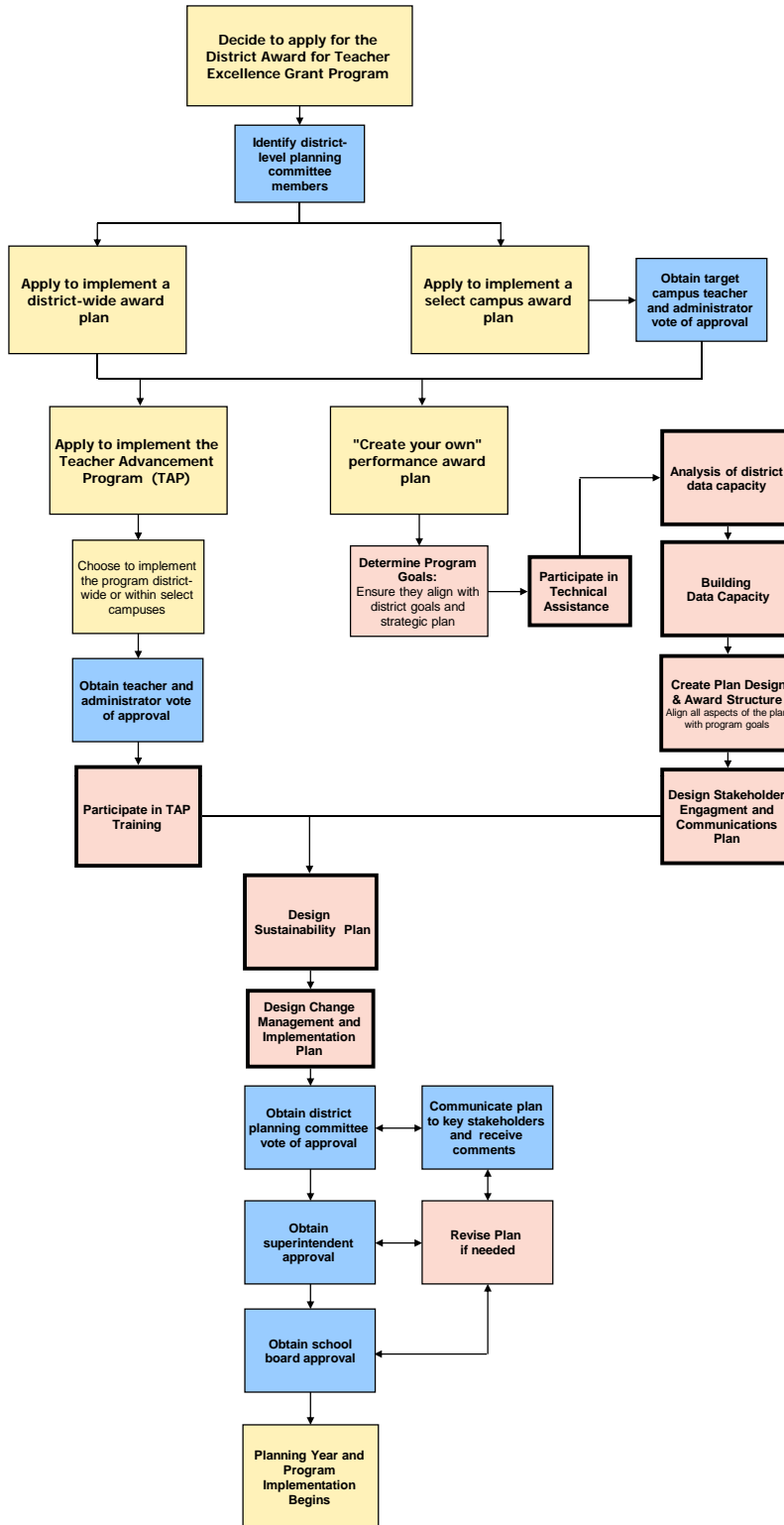


District Award for Teacher Excellence Performance Award Plan Strategy Decision Tree



This chart was devised to help you with the performance award plan process. There are many difficult decisions you will have to make at each point along the way, such as rewarding individual teachers versus groups of teachers, how to accurately and fairly assess all teachers in a school, the role of test scores, the need for new or vastly enhanced data systems, decisions about sufficient pupil progress, determining hard to staff subjects, and determining hard to staff schools.

The breakout sessions of the technical assistance workshop will provide guidance on how to effectively make these decisions and create a fair, comprehensive, and meaningful performance award plan.